

NUTRACEUTICALS



KMS PHARMA

DIVISION OF KMS HEALTH CENTER PRIVATE LIMITED

About Us



- ❖ KMS was established in 2011 with the purpose of being a world-class pharmaceutical R & D company.
- ❖ KMS have seasoned pharmaceutical professionals with cumulative experience of over 200 years.
- ❖ KMS have the capability to support R & D and CRO services for Generic and new molecule entities (NCEs).
We can develop various dosage forms which include Injectable, Oral solids Oral liquids, and Semisolids.
- ❖ In Orals Solids we support R & D for tablets, capsule (Hard and Soft gelatin), powder for oral solution / suspension etc.
- ❖ KMS is always committed towards customer satisfaction and organizational excellence through quality and regulatory knowledge.



KMS VISION & MISSION



OUR VISION

To be a premier India Based Drug Formulation Services Company with a global reach.



OUR VALUES

Implement new ideas & technologies to meet unmet needs and think ahead of time.



OUR MISSION

To provide timely, cost-effective, and innovative solutions to drugs.



COMMITMENT & QUALITY



- ❖ KMS is committed towards meeting customer requirements through continual improvement of our quality systems. KMS always comply with customer requirements and the requirements of the Quality System.
- ❖ KMS also complies the FDA and EU requirement. Currently, KMS is doing product development for USA, Europe and ROW markets.
- ❖ KMS aims to achieve organizational excellence through the timely delivery of a Quality products. KMS is fully committed and continuously strive for the effective implementation of the Quality system.



MARKET POTENTIAL OF NUTRACEUTICALS

- The global nutraceuticals market is predicted to grow from \$396.29 billion in 2021 to \$658.11 billion in 2028 at a CAGR of 9.3% in forecast period 2021-2028
- The number of individuals with metabolic disorders is on the rise across various countries worldwide. This will drive consumer preference for nutraceuticals thereby fostering market statistics.



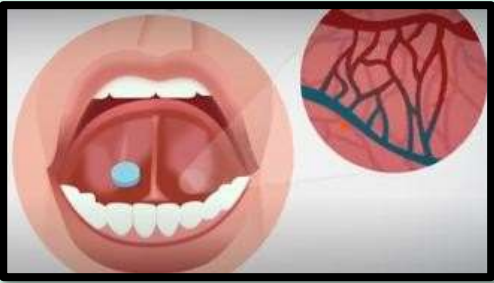
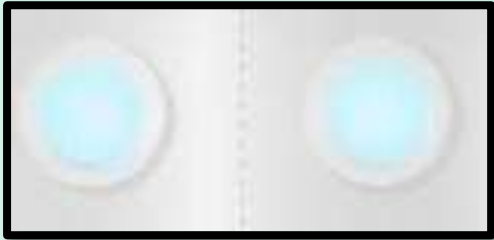


WHY PARTNER WITH KMS?

- KMS incorporates unique technology like **Orally Disintegrating Films (ODF)**, **Orally Disintegrating Wafers (ODWs)**, **Self Emulsifying Drug Delivery System (SEDDS)** & **Pelletization technology** to increase the bio-availability and efficacy of our products.
- Our products have been **clinically proven** for efficacy and we have measurable data on all our products with **complete transparency**.



ABOUT ODW



Orally dispersible Wafers (ODWs), when placed under the tongue, immediately hydrates by soaking saliva following disintegration and/or dissolution releasing active pharmaceutical agent from the dosage form

BENEFITS :

- Rapid onset of action
- Better bioavailability
- Better predictability of effect
- No Water Needed & No after taste
- Better absorption than oral administration
- Needles free & Non-Invasive

ORAL DISPERSIBLE WAFERS

EXAMPLES



Product Category	Active Ingredient(s)	Intended Use	Benefits of Lyophilized Wafers
Analgesics	Acetaminophen	Pain relief	Rapid onset of action; convenient for those with swallowing difficulties.
Antipyretics	Ibuprofen	Fever reduction	Quick dissolution enhances patient compliance, especially in pediatric and geriatric populations.
Antihistamines	Diphenhydramine	Allergy relief	Immediate relief from allergic reactions due to faster absorption.
Antacids	Calcium Carbonate	Heartburn relief	Quick relief from acid indigestion; no need for water.
Antitussives	Dextromethorphan	Cough suppression	Fast-acting relief; suitable for on-the-go use.
Decongestants	Phenylephrine	Nasal congestion relief	Rapid relief from nasal congestion; avoids first-pass metabolism.
Anti-nausea	Meclizine	Motion sickness prevention	Quick onset; beneficial for travelers.
Sleep Aids	Melatonin	Sleep induction	Fast dissolution aids in quicker sleep onset.
Smoking Cessation	Nicotine	Smoking cessation support	Immediate nicotine delivery reduces cravings effectively.
Oral Care	Xylitol	Breath freshening	Convenient oral hygiene; stimulates saliva production.



ABOUT ODF



Orally disintegrating Films (ODFs), when placed on tongue, immediately hydrates by soaking saliva following disintegration and/or dissolution releasing active pharmaceutical agent from the dosage form

BENEFITS :

- Easy Intake
- Immediate Disintegration
- Excellent Bio-Availability
- No Water Needed
- Only dosed amount is taken
- Easy to Carry

ABOUT SEDDS



- Self-Emulsifying Drug Delivery System (SEDDS) technology used for the design of formulations in order to improve the oral absorption of highly lipophilic drug compounds.
- SEDDS after oral administration in soft or hard gelatin capsules and form fine relatively stable oil-in-water (o/w) emulsions upon aqueous dilution owing to the gentle agitation of the gastrointestinal fluids.
- Significant *improvement in the oral bioavailability* of drug compounds has been demonstrated.

Narpega Oral
Liquid Solution

Narpega Soft
Gelatin Capsules

NARPEGA-L



Composition:

Combination of Omega -3 Fatty Acid & Quercetin

Indications:

More than 15 Therapeutic Benefits

USP:

- Shows good antioxidant activity
- Stable oral microemulsion exhibiting good bioavailability
- Can be taken in both fasting and fed condition





NARPEGA-S



Composition:

Omega -3 Fatty Acid

Indications:

More than 15 Therapeutic Benefits

USP:

- Superior in fasting condition and equivalent to LOVAZA under FED Condition
- Higher bioavailability
- Patented soft gel capsule with SEDDS Technology



ABOUT PELLETIZATION TECHNOLOGY



- Extrusion & spheroidization method used for drug loading pellets manufacturing & Wurster spray method for enteric coating of the pellets.
- Pelletization technology adopted for volatile oil ingredient (peppermint oil) and enteric coated to deliver at colon delivery for local action.



Peppermint Pellet Filled
Capsules

KMSCURCUI

Composition:

Oral soluble tablet that contains Cavacurcmin

Indications:

Multiple ailments

USP:

- Bioavailability is increased through buccal absorption
- Pleasant palatability, taste & flavour
- Acceptable by all age population



IBSEASE



Composition:

Peppermint oil in solid dosage form

Indications:

Reduces abdominal pain
with irritable bowel
syndrome

USP:

- Enteric Coated Capsule
- Overcomes the disadvantage of soft gel specialised production development





AFLD



Composition:

Each tablet contains Metadoxine, Silymarin, LOLA, Folic Acid & Pyridoxine Hydrochloride

Indications:

Liver Fibrosis

USP:

- Inhibits fibrogenesis by reducing inflammatory reaction
- Promotes hepatocyte regeneration and reduces hepatic encephalopathy
- Restores hepatic ATP concentration





DRYPSIN



Composition:

Each tablet contains Trypsin, Bromelain, Rutoside & Zinc

Indications:

Alleviates pain, swelling & inflammation

USP:

- Inhibits inflammatory mediators like CRP, Leukotriene & PGE2
- Decreases thromboxane generation & restores biological cell activity
- Effective & safe alternative to NSAIDs





K M S A C



Composition:

Each sachet contains Potassium Citrate & Magnesium Citrate

Indications:

UTI, Urinary calculi, Urgency & Burning micturition

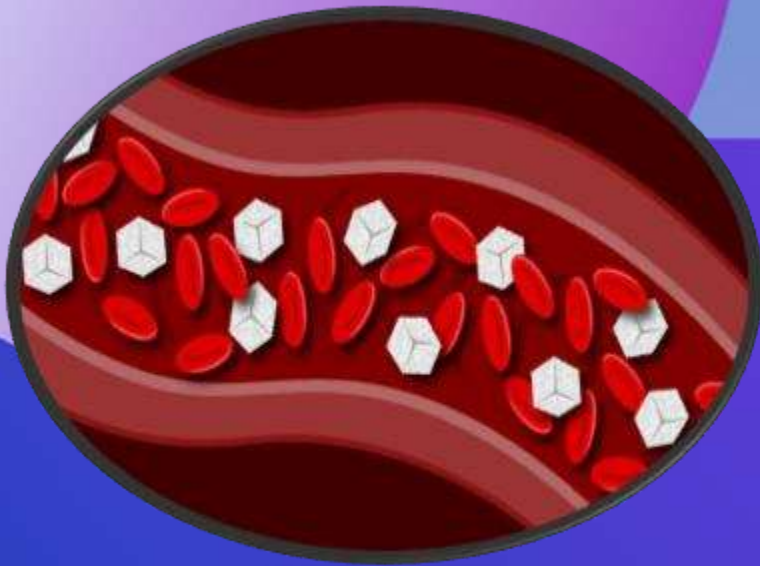
USP:

- Convenient to carry & tasty orange flavour
- Superior to Sodium Citrates





L o H b A 1 c



Composition:

Each tablet contains Chromium Picolonate,
Biotin & Vitamin D3

Indications:

Diabetes Management

USP:

- Has dual effect on glycemic control & lipid profiles



MEPAL

Composition:

Each tablet contains Epalrestat & Methylcobalamin

Indications:

Diabetic Neuropathy & Diabetic Gastroparesis

USP:

- Improves electrical activity in stomach
- Decreased gastric motility in diabetic patients



Neuropathy





SGEN

Composition:

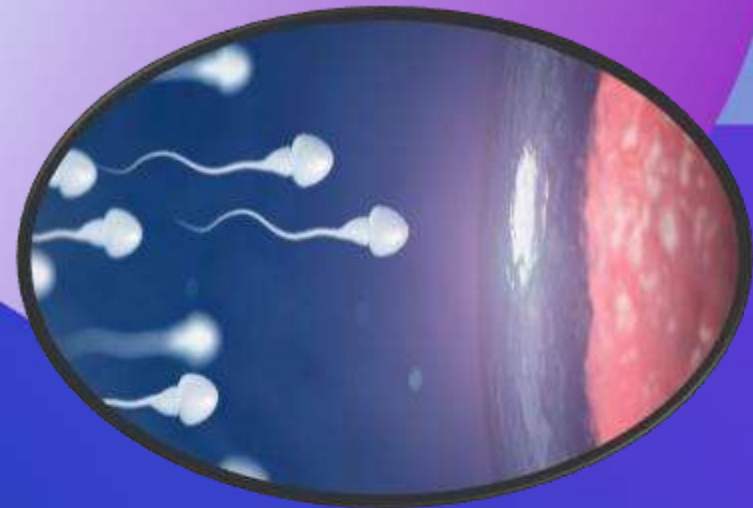
Each tablet contains L Arginine, L Carnitine, Zinc Absorbate & Coenzyme Q10

Indications:

Ensures sperm generation & utility

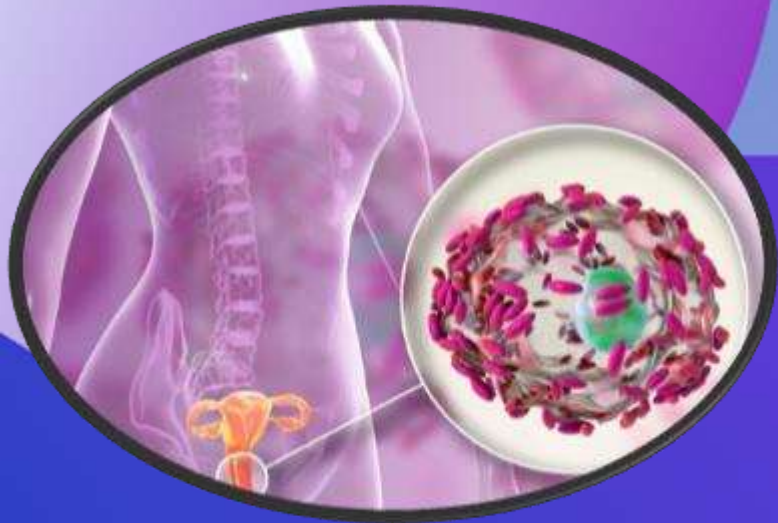
USP:

- Enhances sperm motility
- Improves semen quality
- L Carnitine improved pregnancy rate significantly





V b C a p



Composition:

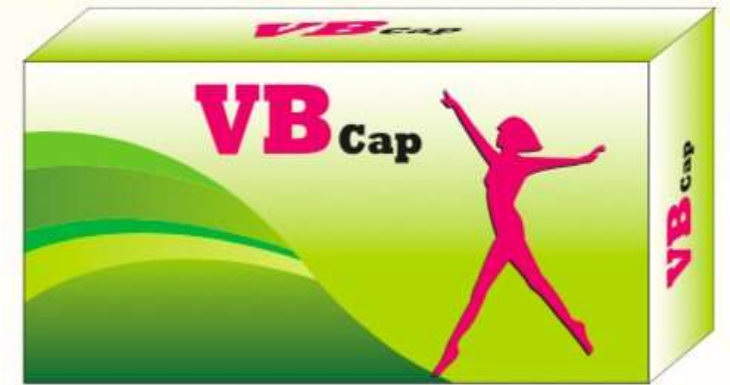
Capsulated oral probiotic that contains
Lactobacillus

Indications:

Bacterial Vaginosis

USP:

- Normalises the vaginal pH
- Adhesion to cervicovaginal cells providing barrier effect against colonization of pathogenic microorganisms



CRAMNIL



Composition:

Contains magnesium bisglycinate

Indications:

Cramps, Osteoporosis, Muscle pains, Arthritis

USP:

- Decreases pain by blocking the NMDA receptor in brain and nervous system
- Dampens inflammation by inhibiting cytokine release in muscles





HALITOSHIELD



Composition:

Combination of clove & cardamom

Indications:

Instant mouth freshener

USP:

- Pleasant palatability
- Ingredients used are natural, sugar free & alcohol free



Composition:

Chewable tablet using patented yeast beta glucan along with natural extracts

Indications:

Immunity booster

USP:

- Maintains energy levels
- Good antioxidant and antimicrobial activity
- Pleasant palatability





I L I V E M E T

Composition:

Combination of Silymarin & DL Methionine

Indications:

Liver Health

USP:

- Accelerates alcohol clearance from blood





AMNE-D VITAMIN



Composition:

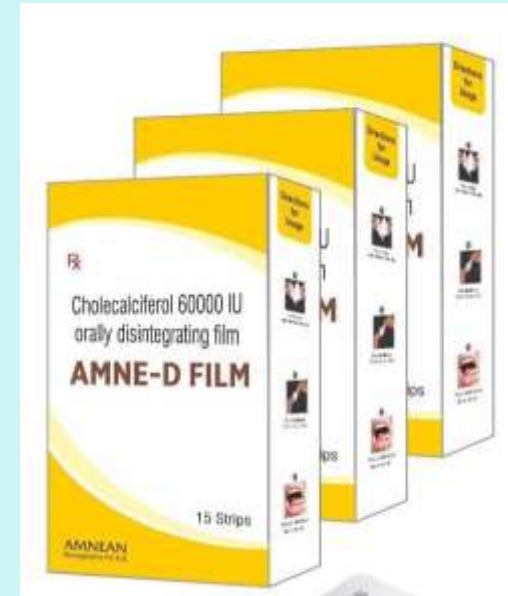
Each film contains Vitamin D3 – 60000 IU

Indications:

Promotes bone health.

USP:

- Novel drug delivery system
- Delivers optimal dosage, fully bio-available
- Easy-to-carry no water required





GYNO CARE - T



Composition:

Combination of Alpha Lipoic Acid, Magnesium & Vitamin B6

Indications:

Gynaecological ailments

USP:

- Prevents risk factors for miscarriage and premature birth
- Reduces growth restriction of foetus and preclampsia

NUTRIVAS



Composition:

Combination of L Carnitine & Ubiquinone

Indications:

Cardiovascular patients

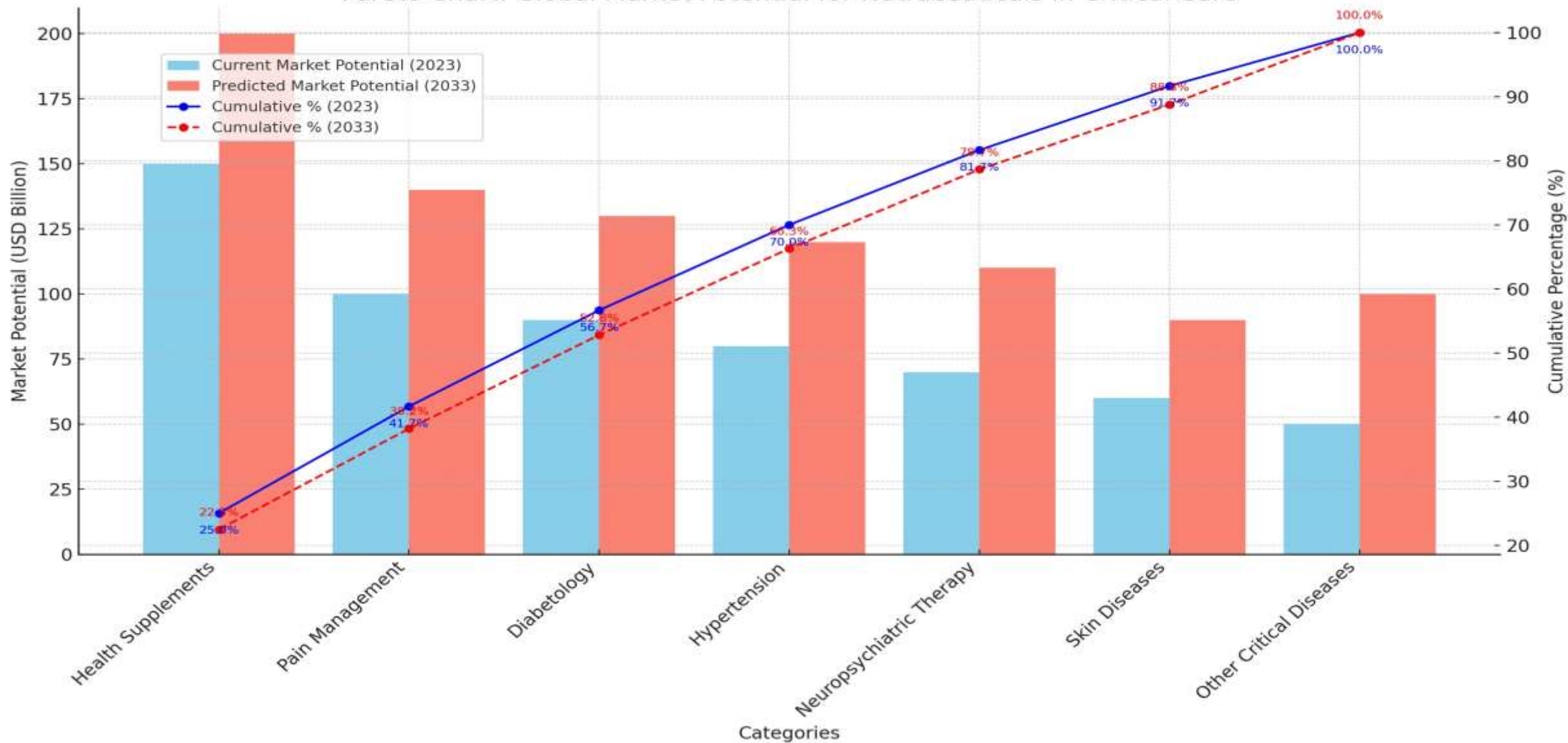
USP:

- Stimulates fatty acid movement and reduces serum levels of lipoprotein
- Decreased serum lipoprotein



GLOBAL MARKET POTENTIAL

Pareto Chart: Global Market Potential for Nutraceuticals in Critical Care





OUR CMO ACCREDITATIONS



THANK YOU



Door No.6, Kamarajar Salai, Selaiyur, East Tambaram, Chennai - 600 059



www.kmshc.com



ganesan@kmshc.com

vasanthi@kmshc.com



+91 9789875194

+91 9445566846